



GTIME

**M. SC. GLOBAL
TECHNOLOGY
AND INNOVATION
MANAGEMENT &
ENTREPRENEURSHIP**

TIME TO GO GLOBAL

www.g-time.org

WHAT IS THE GTIME COURSE?



WHY STUDY GTIME?

In our eyes, learning how to globally manage emerging technology and innovation in an entrepreneurial environment is best done in global teams. Our students come from all over the world and are the basis for a rich diversity both in culture and academic background.

You will gain state of the art education on innovation, technology management, global trend forecasting and entrepreneurship. You will learn how to combine technological and managerial knowledge, so that you can contribute to solving future challenges of the world.

ABOUT GTIME

The MSc. in Global Technology and Innovation Management & Entrepreneurship (GTIME) is a unique 2-year programme offered jointly by six internationally distinguished universities with extraordinary competences in the field of Technology and Innovation Management as well as Entrepreneurship.

GTIME's structure provides students with an international experience by asserting them to complete the second year of the course at one of the 5 partner universities. You will have the choice to study at two out of these six international universities, with the programme's delivery over two years providing a greater depth of learning, more industrial engagement and a rich cultural experience. The MSc. GTIME enables graduates of first degrees in engineering, business/economics, science and technology to successfully manage the innovation process across international boundaries.

Practical projects in cooperation with real companies offer the unique opportunity to establish business contacts at an early stage and to gain valuable experience in dealing with the companies and in teamwork. This can also represent the possible first contact with a future employer.

The following double page shows the composition of the semester contents. Semesters 3 and 4, i.e. the second year, look different depending on the choice of the partner university. You can find detailed information on this under: g-time.org/structure.





COURSE & STRUCTURE

OVERVIEW OF THE COURSES

Global Technology and Innovation Management & Entrepreneurship is an international Master's course hosted by a consortium of six universities. Each student studies in Hamburg in his/her first year and then continues at one of the partner universities.

Semesters 1 and 2 at TUHH provide a strong foundation in the field of Technology and Innovation Management. They look at early and late phases of the innovation management process and concentrate on market research for (radical) innovation, cross functional cooperation at the front end of the innovation process, managing innovation projects over geographical and functional/divisional borders and preparing the market introduction of new products and services. In addition, they provide a foundation in the field of Entrepreneurship.

The course content of semester 3 depends on which partner institution is chosen. Based on their specific core competencies each partner offers courses which complement / deepen the study program of the first year.

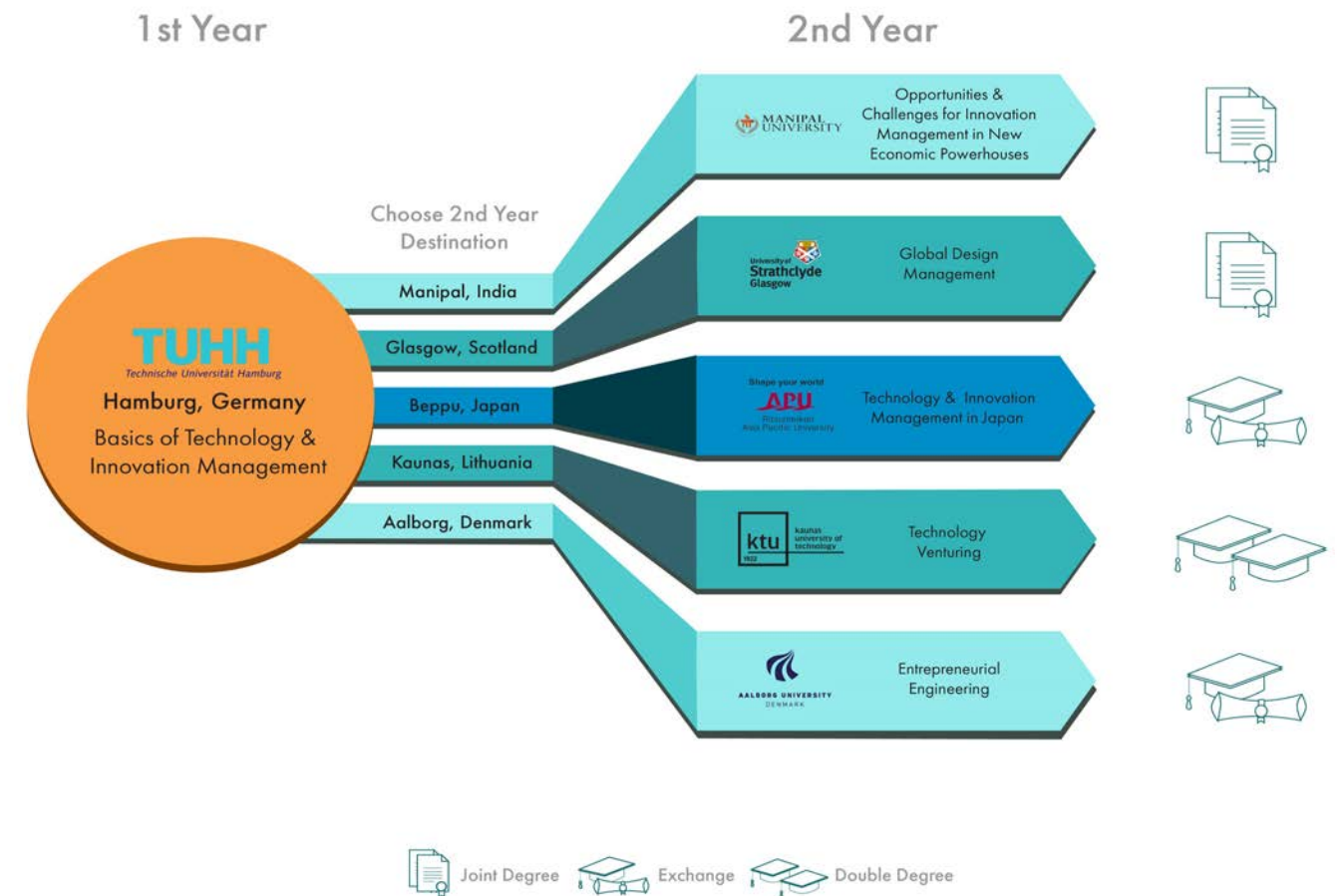
Please see below sections for more detailed information. You can find an overview of the offered courses here: g-time.org/structure.

Fees & Funding

The programme is subject to charges. The website provides information on tuition fees, living expenses and opportunities to receive funding and financial support: g-time.org/fees-and-funding.

THE SECOND YEAR

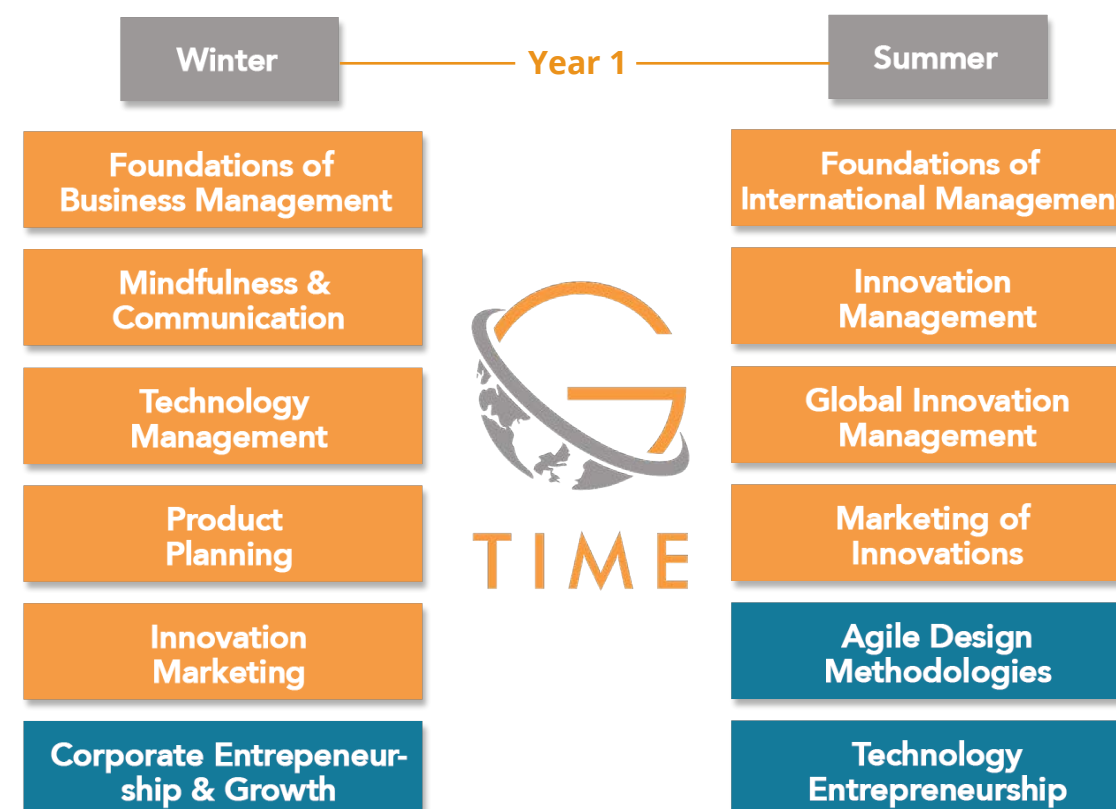
With the start of the second year, the students move to their preferred partner university each characterised by a certain specification which deepens the core qualification by distinct modules.



ABOUT OUR CURRICULUM

The curriculum describes the course content. Each year the students have to achieve a total of 60 ECTS points.

In the first year in Hamburg these are based on lectures, in the second year they are based on lectures (30 ECTS) and the thesis (30 ECTS). The core qualification taught during the first year at Hamburg University of Technology focuses on providing a general understanding of innovation- and technology management. Key areas of research are marketing in the context of innovation, product planning and technology management, the global management of innovation and entrepreneurship. These areas are complemented by optional modules specialising in other related scientific fields. See the two graphics to the right for a better understanding of the first years content.



In the exchange year, students improve on their skills to engage in a global corporate environment, learn how to manage innovation related processes and foster their academic research capabilities. The core qualification comprises the modules shown in the graph. In the GTIME course our pillars are to customize your learning experience in your exchange semester, gain global experience und become an innovation champion.

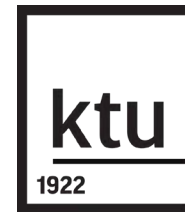
As mentioned above, ECTS points gained through this lectures add up to 30. In addition each student has to complete a thesis (also 30 ECTS) which is not further outlined on this website. For specific questions regarding this issue, please contact the respective contact person. You find the modules offered at each location here: g-time.org.



"I chose Denmark as my second year's destination because the reputation and problem based learning methodology of AAU appealed to me. We got practical insights into entrepreneurship along with the valuable opportunity to work on a start-up idea with people from different disciplines and nationalities. Also, the ethos of Aalborg is very entrepreneurial and student friendly, and it allowed me to easily connect with like-minded individuals." Aashwin Shrivastava



AALBORG UNIVERSITY
DENMARK



kaunas
university of
technology



**MANIPAL
UNIVERSITY**



**Ritsumeikan
Asia Pacific University**

OUR PARTNER UNIVERSITIES

Your first year will take place in Hamburg, Germany.

Integrated exchange semester

Denmark: Aalborg
India: Manipal
Japan: Beppu
United Kingdom: Glasgow
Lithuania: Kaunas

Find an extensive overview at: g-time.org/structure. *Subject to modifications



"Ritsumeikan is a big name in Japan. I didn't want to miss out on the opportunity visiting two of the most technologically advanced countries in the world. My favourites are Beppu's onsens (natural hot water springs). They are the best way to heal naturally while having a swim. Also, my dorm is at the beach and the campus up a hill, so yeah it cannot get better than that." Nihit Acharya

INTERNATIONAL EXPERIENCES

You will spend the second year at one of the partner universities outside Germany. The semester abroad is integrated into the Master's program and thus becomes an integral part of the study program.

All contents and exams will be credited to you and under normal circumstances you will write your master thesis in cooperation with the university.

Besides hosting distinguished universities in the field of Technology and Innovation Management as well as Entrepreneurship education, our global destinations offer a wide range of experiences.

WHERE BIG IDEAS ARE BORN

We believe that education requires a holistic approach. For this reason, we have perfectly coordinated the modules of the program to provide the best possible education in the field of global innovation management and entrepreneurship. The combination of two locations contributes to the acquisition of extensive international experience. Our current students are very satisfied with our offered study program. The graduates have gone on to work in a wide variety of areas to drive innovation.

Luise for example (see left page) says, that “in the two-year master’s program, I had the opportunity to gain valuable theoretical basics and practical experience in the areas of innovation, technology, globalization and entrepreneurship.

I was able to apply the knowledge I gained in my bachelor’s to the content of the GTIME program and gained valuable insights into the management of innovations and technologies. I am very grateful to have been part of the program as I was able to develop new professional and interpersonal skills and build friendships with people from across the globe.”

WHAT OUR STUDENTS SAY

The course offers a great combination of international experience, as well as a great skill set for the challenges after. The GTIME program is an advancement from the former GIM program, where we look back at years of experience.



“I am very grateful for the education I was able to receive through my time on the programme as I was able to learn and grow as a professional working on things I love to do!”

Rogelio - GIM Alumni
Co-Founder and CTO of Mindmate



“The GTIME course presents a great opportunity for me to not only grow my knowledge in the field of innovation management, but also to gain relevant international experience.”

Tatiana - Student
Current GTIME student



“I believe a master’s degree that is carried out globally is the perfect chance to add international experience to one’s academic as well as professional career.”

Matthias - GIM Alumni
Functional Analyst at delaware UK



“I am very grateful to have been part of the GTIME program as I was able to develop new professional and interpersonal skills and build friendships with people from across the globe.” Luise
- current GTIME student





*Malte Krohn spent his year in
Glasgow, United Kingdom*



*Nihit Asharya spent his year in
Beppu, Japan*



Manipal, India



Kaunas, Lithuania

EXPERIENCE DIFFERENT CULTURES

Studying abroad helps you build a network around the world, appreciate other cultures, meet the challenges of living in another country and gain a greater understanding of the world. Furthermore, it allows you to experience another part of yourself in a different environment.

And if all this rush is geared towards success in your career, international education will certainly be worthwhile. It is not only a voyage of discovery, but also an investment in your resume. These are all things that modern companies look for when hiring employees, and such qualities will become even more important in the future.

The GTIME program is designed to promote exactly this. By combining two international locations, the acquisition of these cross-border competences is optimally supported.

GET IN CONTACT WITH US!

We thank you very much for your interest and are looking forward to answering your questions with our team. The GTIME program is designed for all those who would like to complete a Master's degree on an international basis, which will provide you with skills in the field of global innovation management. Furthermore, the focus lies on the topic of entrepreneurship, which should enable the graduate to independently drive innovation. Our team consists of industry-proven instructors who use their extensive knowledge to create an optimal learning atmosphere.

Our application deadline is the first of March 2021. To get to know more about the application procedure, the required documents or any other information, please visit g-time.org.

If you have any questions feel free to contact our GTIME office and drop us a mail at: stephan.bergmann@tuhh.de. We are looking forward to hearing from you.

Your GTIME team!



Prof. Dr. Dr. h.c. Cornelius Herstatt
Managing Director

- Managing Director and full professor with the Institute for Technology and Innovation Management (TIM)
- Long-time experience as a consultant in the area of Technology and Innovation Management, Strategy and Organisation



Dr. Stephan Buse
Programme Coordinator

- Chief Engineer of the Institute for Technology and Innovation Management (TIM)
- Many years of experience as a management consultant in the key areas: Global Innovation Management, and International Business Strategy



Stephan Bergmann
Programme Coordinator Assistant

- Research assistant at the TIM institute pursuing an industry based PhD in the field of frugal innovation
- Work experience in the mechanical engineering industry in the key areas: Product- and Innovation Management and Market Research



Malte Krohn
Programme Coordinator Assistant

- Research assistant at the TIM institute pursuing an industry based PhD in the field of frugal innovation
- Faculty champion for the University Innovation Fellows programme of Stanford's d.school

GET MORE INFORMATION

[WWW.G-TIME.ORG](https://www.g-time.org)

APPLY NOW





TIME

TIME TO GO GLOBAL



ASK US A QUESTION:

Phone: +49 40 42878 3829

Email: stephan.bergmann@tuhh.de

www.g-time.org

Am Schwarzenberg-Campus 4
21073 Hamburg, Germany

A course offered by

TUHH
Technische Universität Hamburg